


ALUTECH
SYSTEMS



NEW PROFILE
for Your Business

ALUMINIUM PROFILE SYSTEMS



Alutech Systems Ltd is the UK operation for the Alutech Group specifically selling their Alumin Techno product range. The range consists of Aluminium windows, doors, façade systems, conservatory systems & internal partitioning systems amongst other products.

Alutech take control of the total process. We Design all systems in house, smelt and extrude our Aluminium, along with a full anodising and powder coating facility to optimise quality control and reduce lead times to a minimum.

Currently AluminTechno produces a wide range of aluminium extrusions (more than 1000 different configurations), some specially extruded for clients requirements, others for construction, roller shutters, motor vehicles, consumer goods and furniture. The current annual output is in excess of 50,000 tonnes.

Product Testing is key to demonstrating the product quality and its integrity within a building. Aside from our internal testing facilities we employ the use of many independent accredited test houses. These include Wintech for PAS 24 certification for windows and doors, as well as CWCT accreditation for curtain walling. IFT Roseheim for CE certification for the range of products.

Quality control is demonstrated by complying with the TUV CERT systems of ISO 9001:2009, meeting all international requirements.

The finished quality fo Aluminium mouldings produced by AluminTechno is proved by three international certificates, QUALICOTE, SEASIDE AND QUALANOD

Contents

Window and door systems

Thermally Broken Window and Door system W62 3

Thermally Broken Window and Door system W72 3

Fire rated window and door system FR76 4

Non Thermally broken window and door system C48 4

Curtain Walling and Façade Systems

Curtain Wall System F50 5

Curtain Wall System – light – F50 Light 5

Unitized Curtain Wall System EF65 6

Interior Mounted Curtain Wall System IGF65 6

Ventilated cladding façade system ALT 150 7

Sun Protection System SP50 7

Exterior Ventilation Grille System VR26 8

Skylight System

Skylight system SKL50 8

Residential Systems

Lift and slide patio door SL160 9

Bi-folding door BF70 9

Interior Systems

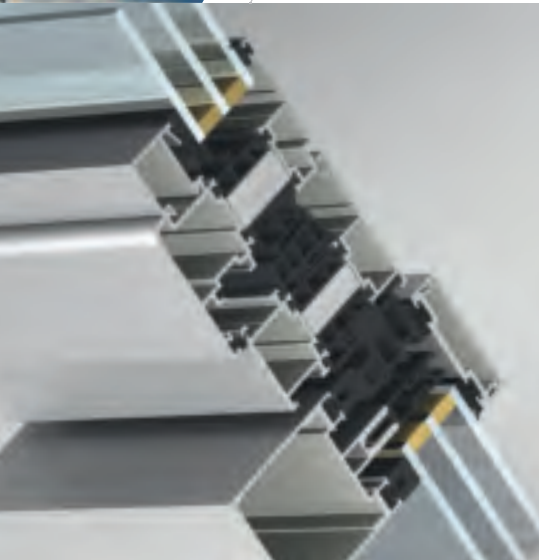
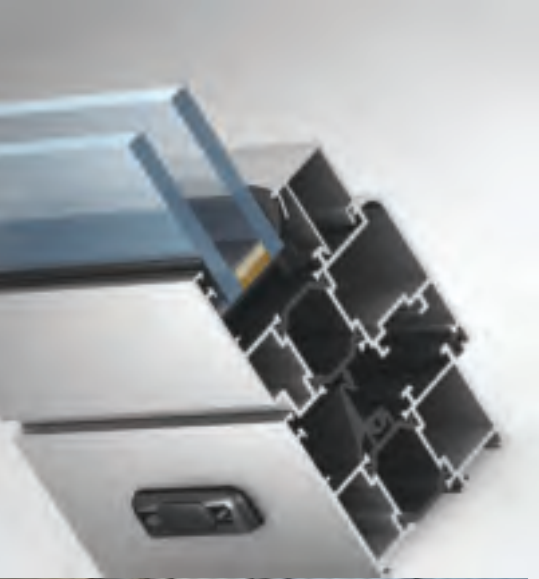
Office and interior partition systems ALT 110/111 10

Notes

Please note that all Alutech Systems are supported by Logikal and Alupro estimating systems

Details of punch tooling is available on request





WINDOW AND DOOR SYSTEMS

ALT W62

WINDOW AND DOOR SYSTEM WITH THERMAL BREAK

Description

The ALT W62 system is a series of thermally insulated profiles with 62 mm depth designed for fabrication of windows, doors and curtain walls of various types of configuration and complexity which will correspond for high thermal and soundproof requirements.

Product information

Watertightness	Class 7A
Wind load resistance	Class C5
Acoustic insulation	33 (-2;-5)db
Thermal insulation U Value	1,4 - 1,6W/(m ² K)
Air permeability	Class 4

T&t window performances (triple glazing, $U_g = 0,83 \text{ W}/(\text{m}^2\text{K})$ acc. to EN 14351-1:2006+A1:2010

Main advantages

- Durability, deformation resistance
- Corrosion resistance, UV-resistance as well as acids, oils and other environmental factors resistance
- Fabrication of products for different climate regions
- PAS 24 approved
- Casement version available

ALT W72

WINDOW AND DOOR SYSTEM WITH THERMAL BREAK

Description

It is a multipurpose flexible system designed for manufacturing of door and window units, window walls and entrances with strict requirements to thermal insulation and acoustic proofing.

Product information

Watertightness	Class E1050
Resistance to wind load	Class CE2400
Acoustic proofing	42 (-2;-5)db
Thermal insulation	1,0 - 1,1W/(m ² K)
Air permeability	Class 4

T&t window performances (triple glazing, $U_g = 0,79 \text{ W}/(\text{m}^2\text{K})$ acc. to EN 14351-1:2006+A1:2010

Main advantages

- Maximum size of units is larger than alternatives from wood and UPVC
- Simple and fast method of fabrication
- High thermal and sound performance
- PAS 24
- Casement version available

ALT FR76

FIRE RESISTANCE DOORS

Description

The ALT FR76 system is designed for interior and exterior fire resistant doors and partitions. It is also possible to combine them in rooms and buildings with strict fire resistance requirements.

Product information

Sound proofing	up to 43 dB
Thermal insulation	1,0m ² °C/W
Resistance to wind load	Class A

Main advantages

- Possibility of doors with EIW30, EIW45, EIW60 fire-resistance rating fabrication
- Use of glass beads without shaping for steel elements
- Same results of fire resistant protection from both sides of door during testing
- Fabrication of doors with perimeter locking
- Installation of automatic threshold

ALT C48

WINDOW AND DOOR SYSTEM WITHOUT THERMAL BREAK

Description

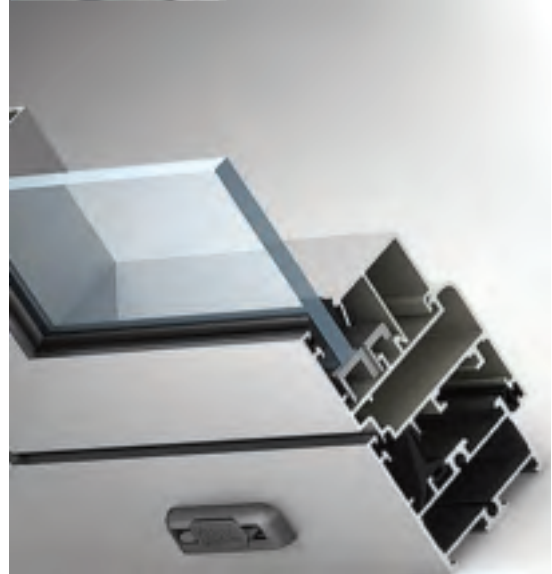
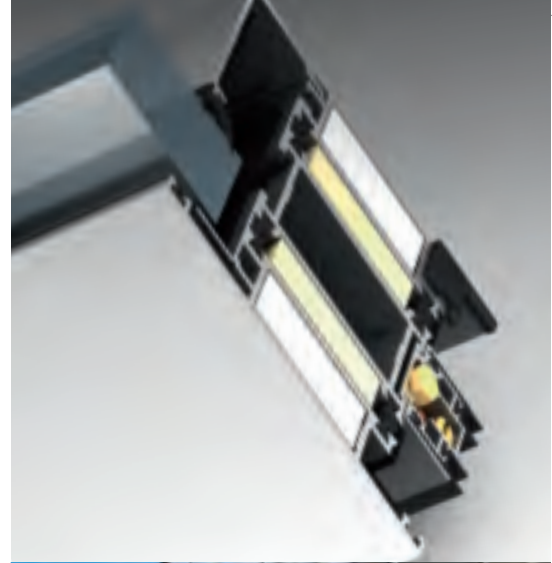
The ALT 48 system is suitable for fabrication of interior and exterior translucent units: doors, windows, entrances, partitions, lobbies etc.

Product information

Internal visible width	48 mm
External visible width	66,5 mm
Mullion depth	48 mm
Infill unit thickness	up to 30 mm
Glass fixing method	Glass bead profiles

Main advantages

- Possibility of fabrication of various types of doors
- Possibility of ALT VR26 ventilation grilles system integration
- Possibility of automatic sliding doors manufacturing
- Possibility of traffic doors manufacturing
- High water and air resistance thanks to double gasket contour between door and frame profiles



ALT F50 CURTAIN WALL SYSTEM

Description

The ALT F50 curtain wall system is designed to fabricate translucent facades of various complexity: curtain walls, inclined translucent facades, skylights as well as other spatial units. The system provides a variety of technical solutions to create different variants of internal and external design of facade. It is also possible to integrate various types of doors and windows.

Product information

Internal visible width	50 mm
External visible width	50 mm
Mullion depth	12-270 mm
Infill unit thickness	4-62 mm
Glass fixing method	Using clamp profiles (elements) and decorative caps

Main advantages

- High thermal characteristics (thermal conductivity of mullion junction $U_f=0,6-1,8W/m^2K$)
- Installation of super heavy glass units (up to 700 kg)
- Fabrication of complex spatial facilities (polyhedral pyramids, large-sized glass units)
- Different design options (classic, structural, semi-structural)
- Various options of integrated doors and windows integrated in the system
- CWCT tested

ALT F50 LIGHT CURTAIN WALL SYSTEM

Description

ALT F50 Light is a sub brand of ALT F50 curtain wall system and is designed for fabrication of light vertical walls, suspended or mounted to floor slabs, straights or rotated in plan at an angle of $172,5^\circ-180^\circ$. The bearing profiles are easily combined with profiles of ALT F50 system and therefore they also can be used in fabrication of inclined translucent surfaces, skylights, domes, sun rooms as well as other spatial constructions. The bearing framework consists of vertical and horizontal elements of 50 mm wide that accentuates facade lightness and transparency.

Product information

Internal visible width	50 mm
External visible width	50 mm
Mullion depth	62-140 mm
Infill unit thickness	Up to 56 mm
Glass fixing method	Using clamp bar profiles and decorative caps

Main advantages

- Simplicity of machining and mounting
- Economy solution comparing with the classic system
- Full compatibility with the main system
- Possibility of doors and windows from ALT F50, ALT W62, ALT W72, ALT C48, ALT C43 systems integration

ALT EF65

UNITIZED CURTAIN WALL SYSTEM

Description

The ALT EF65 facade system is designed for envelope glazing with prefabricated units. This method of installation eliminates the necessity of scaffolds and makes the process of facade installation much easier especially when it comes to high-rise buildings.

The unitized facade system has some important advantages in terms of installation and quality of building envelope thanks to preassembling in a workshop.

Product information

Internal visible width	65 mm
External visible width	65 mm
Mullion depth	120-150 mm (up to 200 mm)
Infill unit thickness	Up to 56 mm
Glass fixing method	Glass bead profiles

Main advantages

- Possibility of assembling at low temperatures without any significant changes in technical process
- High degree of readiness to the beginning of building exploitation
- Fast recovery of invested funds
- Using of floor-by-floor assembling method with a closed contour
- Allows to make finishing works earlier

ALT IGF65

INTERIOR MOUNTED CURTAIN WALL SYSTEM

Description

The ALT IGF65 interior mounted curtain wall system with thermal break is designed for fabrication of translucent facades. A distinctive feature of the system is the possibility to install its elements from the inside of a building without using scaffolding and platforms.

Product information

Internal visible width	65 mm
External visible width	65 mm
Infill unit thickness	4-50 mm
Maximum infill weight (basic kit of profiles)	150 kg
R-value	R1=1,21 m ² K/W; R2=1,24 m ² K/W

Main advantages

- Possibility of suspended as well as mounted to floor slabs facade fabrication.
- Possibility of installation from the inside of a building even on pillars (upon condition that pillars will be mounted after ALT IGF65 system installation)
- Pre-fabricated fire barriers
- Vertical mullions are mounted to eliminate loss of thermal integrity
- Installation of integrated outside opening windows



CURTAIN WALLING AND FACADE SYSTEMS

ALT 150

VENTILATED CLADDING FACADE SYSTEM

Description

Ventilated cladding facade is a modern solution which improves energy efficiency of a building and decreases costs of its maintenance, improves its exterior and makes it more attractive for customers and tenants by creating more comfortable conditions for work and rest. Thanks to a wide range of finished materials available in ventilated facades, it is possible to make the building's exterior unique and suited to the architecture of any city.

Product information

Authorized height of installation	up to 150 m
Seismic stability	up to 10 on Richter scale
Insulation thickness	up to 250 mm
Minimum life period	More than 50 years

Main advantages

- Unlimited compensation of deformations
- Thermal homogeneity
- Wide range of adjustment
- High corrosion resistance
- Simplicity of repairing and replacement of damaged elements

ALT SP50

SUN PROTECTION SYSTEM

Description

The ALT SP50 system is intended for designing exterior sun protections or outside decorative elements, creating particular building shapes.

Product information

Weight of 1 m	0,957-4,148*kg
Width of sun protection louver	100 mm-280, (if more than 280 mm – composed louvers)
Lx	30,47-824,1*cm4
Ly	2,39-41,13*

* - only for non-composed louvers

Main advantages

- Two variants of louvers fixation
- Wide range of louvers sizes
- The system contains several types of clasping brackets
- Possibility of special fixing elements installation

ALT VR26

EXTERIOR VENTILATION GRILLE SYSTEM

Description

Outside ventilation grilles ALT VR26 are designed for ventilation of non-residential facilities and its protection from rain and snow penetration.

Product information

Optical free space between louvers	50%
Real free space between louvers	40%
Louvers spacing	50mm
Min grille dimensions	134 x 134 mm
Max grille dimensions	1600 x 1600 mm

Main advantages

- Simplicity of machining and assembling
- High speed of manufacturing
- Grilles are installed the same way as usual glazing

SKYLIGHT SYSTEM

ALT SKL50

SKYLIGHT SYSTEM

Description

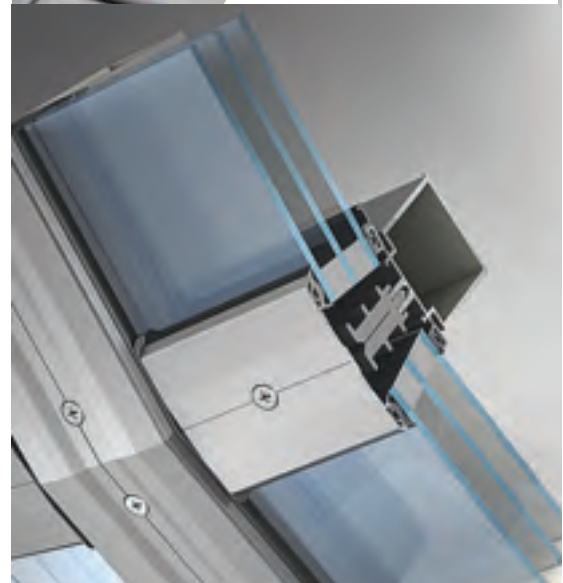
The skylight system ALT SKL 50 is designed to create translucent glazing structures of different configurations: pent roofs and span roofs, domes, arches, pyramids of various complexity. Translucent roofs, rooflights give an attractive and unique design to buildings as well as a perfect security from poor weather conditions.

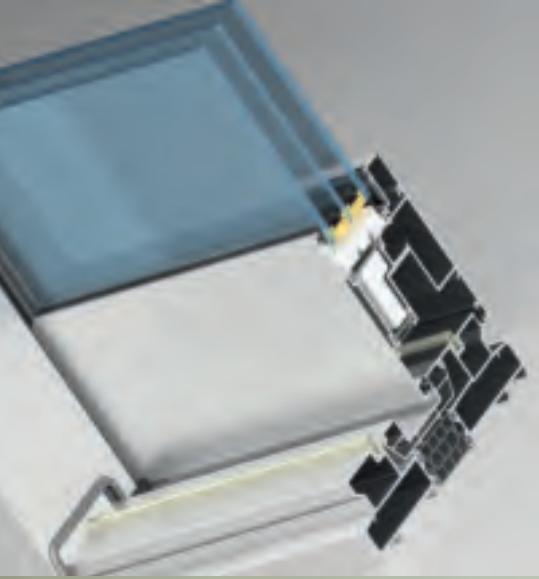
Product information

Internal visible width	50 mm
External visible width	50 mm
Mullion depth	14,5 – 202 mm
Glass fixing method	Using clamp bar profile
Types of opening elements	Smoke removal hatches

Main advantages

- Possibility to use profiles and components from ALT F50 system
- Possibility to use new flush fastened clamp bars as well as pressure plates from ALT F50 series
- Use of foamed thermal breaks allows to reach the R value $>1\text{m}^2\text{C}/\text{W}$
- Using of "swinging" supports for glazing allows to exclude all additional operations for fabrication of "wedging" supports





RESIDENTIAL SYSTEMS

ALT SL160

LIFT AND SLIDE SYSTEM

Description

The ALT AL160 system is designed for thermally insulated lift and slide doors and windows with one or several active leaves and fixed parts. The system provides architects and designers with broad options of large openings design.

Product information

Sound proofing	up to 40 dB
Thermal insulation	1,6 W/m ² K

Main advantages

- Possibility of 400 kg sashes fabrication with length and width more than 3 m
- Using of polyamide thermal breaks of "Anti Bi-Metal" technology
- Includes high quality seals, leveling and advanced security features
- PAS 24 approved
- Available as standard sliding patio door

ALT BF 73

BI-FOLDING DOOR

Description

Aluminium Bi-fold door, designed to provide maximum light ingress with minimum aluminium, whilst retaining strength and security. Excellent thermal capabilities to suit today's environmental requirements. Suitable for both residential and commercial applications.

Product information

120 mm vertical mullion – allows maximum light
1200 mm wide sash – fewer sash, more light, less aluminium
3000 mm high leaves with standard hardware
U value – Thermal efficiency, down to 1.4 U W/m ² K
Air, Wind, Water tested to – 600 pa, 1200 pa, 600 pa respectively
Max overall possible width of 16.8 m

Main advantages

- Engineering grade rollers to create a 'swoosh' when operating
- PAS 24 security rated
- Low threshold option available
- Single or dual colours available
- Invisible gaskets – creating 'cleaner' looking doors

INTERIOR SYSTEMS

ALT 110

OFFICE PARTITION SYSTEM

Description

The ALT110 office partition system is designed to organize working space and create various functional facilities providing comfortable working conditions.

Technical data

- The partition is assembled with steel corners using self-tapping screws without preliminary drilling
- There is a possibility to install single and double translucent and impervious infills: 4, 5, 6 and 8 mm glass, gypsum board, flake board, medium density fiber board (MDF), vinyl covered gypsum board and other materials from 4 to 16 mm thick
- Sun blinds installation of various types from 16 to 26 mm thick is possible
- Turn profiles allow to design angles of 90-270°
- Installation of single and double doors with single and double infill units

ALT 111

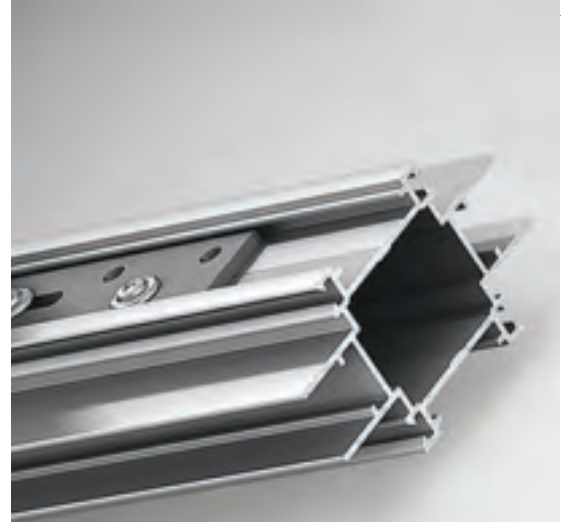
INTERIOR PARTITION SYSTEM

Description

The ALT111 interior partition system is a perfect solution for arrangement of working space and it opens ample opportunities for interior design in premises of any purpose.

Technical data

- The infill unit is fixed with a plastic clamp providing a handy mounting and dismantling of the partitions. This innovative solution is protected by patent
- Vertical to horizontal mullion connection is made with detachable brackets and self-tapping screws that completely eliminates consecutive mounting
- Can be combined with gypsum board partitions
- Allows to install single and double translucent and impervious infills: 4, 5, 6, 8, and 10 mm thick glass, gypsum board, flake board, medium density fiber board (MDF), vinyl covered gypsum board and other materials from 4 to 12,5 mm thick
- The system provides acoustic proof level up to 40dB



A detailed 3D cutaway illustration of a window frame assembly. The image shows the internal components of the frame, including the sash, glazing, and various seals and hardware. The components are rendered in shades of grey and black, with some parts highlighted in a light blue color. The background is a light blue gradient, suggesting a sky or a bright environment. The overall composition is technical and precise, highlighting the complexity of the window's internal structure.

Alutech Systems Ltd

Low Mill Lane, Havelock Street
Ravensthorpe Industrial Estate,
Ravensthorpe

Dewsbury, WF13 3LN

United Kingdom

e-mail: info@alutechsystems.co.uk

Call us: 01924 350 110

www.alutechsystems.co.uk